



**MBB-1601390101010300** Seat No. \_\_\_\_\_

**First Year B. A. (ID) (Sem. I) Examination**

**November / December – 2016**

**Technical Representation Drawing – I**

Time : 2 Hours]

[Total Marks : 50

- Instructions :** (1) All questions are compulsory.  
(2) Any ambiguity will be considered as a wrong answer.

- 1 A regular pentagon of 25mm side has one side on the ground. Its plane is inclined at 45 degree to the H.P. and perpendicular to the V.P. Draw its projections. **10**

**OR**

- 1 Draw the projections of a circle of 50 mm diameter resting in the H.P. on a point A on the circumference, its plane inclined at 45 degree to the H.P. and parallel to the V.P. **10**

- 2 Draw the projections of a triangular prism, base 25mm side and axis 50mm long, resting on one of its rectangular faces on the H.P. with the axis inclined at 45 degree to the V.P. **10**

**OR**

- 2 Draw the projections of a cone, base 40mm diameter and axis 50mm long resting on the H.P., with the axis inclined at 45 degree to the V.P. **10**

- 3 A cube of 35mm long edges is resting on the H.P. on the one of its with a vertical face inclined at 30 degree to the V.P. it is cut by a section plane parallel to the V.P. and 9mm away from the axis and further away from the V.P. Draw its sectional front view and the top view. **10**

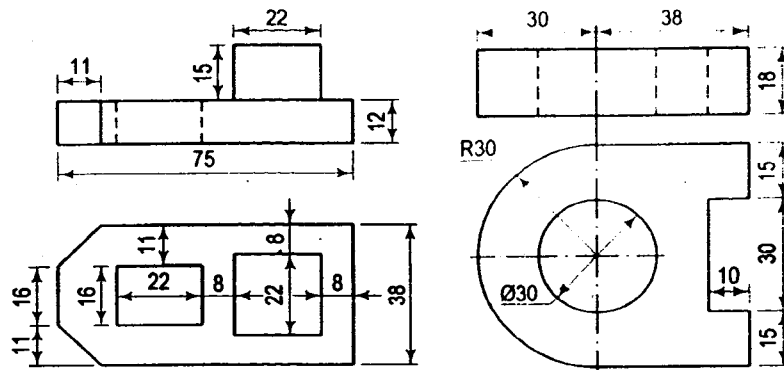
**OR**

- 3 A pentagonal pyramid, base 30mm side and axis 65mm long, has its base horizontal and an edge parallel to the V.P. A horizontal section plane cuts it at a distance of 25mm above the base. Draw its front view and sectional top view. **10**

- 4 Draw the isometric view of given object.

10

OR



- 5 Draw One point perspective of the given object.

10

Condition: Don't take SP a line with the centre of the object

(A) Hexagon prism (side = 25mm, height = 50mm)

OR

(B) Square pyramid (side = 25mm, height = 50mm)